

Orchestrate

Scripting and Automation Application

User's Guide

Copyright © 1998-2005 Software Bisque, Inc.
Revision 1.1

Information in this document is subject to change without notice and does not represent a commitment on the part of Software Bisque. The software and/or databases described in this document are furnished under a license agreement or nondisclosure agreement. They may be used or copied only in accordance with the terms of the agreement. It is against the law to copy the software on any medium except as specifically allowed in the license or nondisclosure agreement. The purchaser may make one copy of the software for backup purposes.

No part of this manual and/or databases may be reproduced or transmitted in any form or by any means, electronic or mechanical, including (but not limited to) photocopying, recording, or information storage and retrieval systems, for any purpose other than the purchaser's personal use, without the express written permission of Software Bisque.

This document was produced using Microsoft Word.

© 1998-2005 Software Bisque, Inc. All rights reserved.

CCDSOFT CCD Astronomy Software[™] and *TheSky Astronomy Software*[™] are trademarks of Software Bisque.

Windows[™] is a trademark of Microsoft Corporation. *Microsoft Word*[™] is a registered trademark of Microsoft Corporation.

All other product names are trademarks of their respective owners and are used solely for identification.

Table of Contents

Typographic Conventions.....	5
Windows Conventions.....	5
What is Orchestrate?.....	6
High-Level Programming Language Support.....	6
Compatible Devices.....	6
Minimum System Requirements.....	8
Installing Orchestrate.....	8
Windows 95/98/Me/NT/2000/XP Home/XP Professional Installation.....	8
Adding the Common Files Folder to the Path System Variable.....	8
Uninstalling Orchestrate.....	9
Orchestrate User Interface.....	10
Spreadsheet Columns.....	10
The Orchestrate Scripting Language.....	10
ImageThenSlewTo Notes.....	12
SetShutterStrobing Notes.....	12
AutoMap Notes.....	12
TakeExposure Notes for Windows 95/98/Me Users.....	13
AppStart, AppStartup, AppShutdown, AppExit Command Notes.....	13
Format Notes.....	14
The Comment Field.....	15
Typing in Scripts.....	15
Importing Scripts.....	15
Exporting Scripts.....	16
Establishing Connections to Software Applications or Hardware Devices.....	16
Establishing Remote Connections to Software Applications or Hardware Devices.....	16
Starting an Orchestrate Session.....	16
Troubleshooting Server Connections.....	18
Ending an Orchestrate Session.....	20
Exporting Data from TheSky.....	20
General.....	21
Simple List Format.....	21
Orchestrate List Format.....	22
Show Path.....	23
Number Format.....	23
Object Type.....	23
List Source/Destination.....	24
Data Source.....	24
Data Destination.....	26
Filtering Objects.....	26
Sorting.....	27
Scripting.....	29
Mapping.....	31
Watched Folder.....	32
Script Number.....	32
Handshake File.....	32
Corresponding TLE File.....	32
Working Folder.....	33

Done Folder	33
Monitoring The Watched Folder	33

Typographic Conventions

This manual uses the following typographic conventions.

Example of Convention	Description
a:install ; 12 15 36 74 15 19	Courier type face is used for file and folder (directory) names, for text typed from the keyboard, and to display the contents of files and sample data.
<i>geometric</i> <i>CCDSofT</i>	<i>Italic</i> text is used to highlight new terms, for emphasis and to identify product names.
F1 ENTER	Keystrokes are shown in caps. If two keys have a plus sign (+), <i>press and hold</i> the first key, then press the second.

Windows Conventions

This manual assumes you already have a basic understanding of how to use Windows. Here are a few reminders of mouse usage and Windows terminology.

Term	Description
Click	Point the mouse pointer (the on-screen arrow) to an object or command, then quickly press and release the left mouse button. “Click” always means click left. If you are supposed to press the right mouse button, it will say “Click right”.
Double-click	Point the mouse pointer (the on-screen arrow) to an object or command, then press the left mouse button twice, very quickly.
Select	Point the mouse cursor at a command or item in a list, then click the left mouse button.
Drag	Press <i>and hold</i> the left mouse button. Then move the mouse while continuing to hold the button down.
Dimmed	When a command or function is not available, it is shown in gray (rather than black). Unavailable functions are therefore said to be <i>dimmed</i> .
Marked; Clear	If a check box has a mark in it, it’s “marked”, if there is no mark, it’s “clear”.
Control button	The control button is the button on the upper left of a window or dialog box. Clicking it once displays the control menu.

What is Orchestrate?

Orchestrate is a Windows application that works in conjunction with TheSky™ Astronomy Software and CCDSoft™ CCD Astronomy Software to allow unattended, scripted operation of robotic telescopes, CCD cameras and other astronomical devices. The entire nature of your observing system changes when these applications are combined using Orchestrate.

Orchestrate goes beyond unattended control of telescopes and CCD cameras. Your interactive sessions also benefit due to the flexibility and ease with which you can repeat operations or create custom observing scripts.

Additionally, operations that are taxing to humans, or simply difficult to accomplish rapidly, can be relegated to the computer. For example, slewing the telescope to a satellite, then quickly taking an exposure before the satellite has moved is difficult to accomplish interactively. Orchestrate makes it easy.

Super novae and minor planet searches are two examples of space surveillance that are greatly aided by automation. Using TheSky's built-in Orchestrate script generator, mosaic grids can be generated so that Orchestrate will systematically image a given area of the sky with a specified overlap. Your telescope and CCD camera can generate your own sky survey, while *you* sleep!

This document is intended to provide sufficient information to get you started automating your astronomical hardware using TheSky, CCDSoft, and Orchestrate.

The section titled "Exporting Scripts" describes how to create lists of objects or positions for use by Orchestrate using TheSky version 5.0.

High-Level Programming Language Support

Orchestrate also permits TheSky Level IV version 5 to be scripted via VBScript, JScript, Perl, or other high-level programming language. See "Starting an Orchestrate Session" for the steps required to configure your computer so that TheSky can be scripted. Visit the [Software Bisque Remote Astronomy Software Component Object Model \(RASCUM\) web site](#) for additional documentation and source code samples.

Compatible Devices

TheSky Astronomy Software is used to control many different robotic telescopes including the following (all suited for automation).

- Astro-Physics GTO telescope mounts.
- Celestron Ultima 2000 series.
- Celestron NexStar telescopes.
- DFM Engineering telescopes.
- Losmandy Gemini telescope mounts.
- Meade LX200 telescopes
- Meade Autostar II (LX200 GPS) telescopes.
- Paramount GT-1100, Paramount GT-1100S, Paramount ME Robotic Telescope Mount from Software Bisque, or any telescope using Software Bisque's Telescope Control System (TCS).
- Quadrant Systems Coordinate III series.
- Takahashi Temma telescopes.
- Telescopes supporting the Astronomical Command Language (ACL)
- Telescopes using TheSky's Applications Programming Interface (TeleAPI).

CCDSOFT CCD Astronomy Software supports the following CCD cameras.

CCD Camera Model	Manufacturer
PixCel 237	Santa Barbara Instrument Group (sold by Celestron International)
PixCel 255	Santa Barbara Instrument Group (sold by Celestron International)
ST-4	Santa Barbara Instrument Group.
ST-5C	Santa Barbara Instrument Group
ST-237	Santa Barbara Instrument Group
ST-6 (all models)	Santa Barbara Instrument Group
ST-7 (all models)	Santa Barbara Instrument Group
ST-8 (all models)	Santa Barbara Instrument Group
ST-9 (all models)	Santa Barbara Instrument Group
ST-10 (all models)	Santa Barbara Instrument Group
ST-1001E (all models)	Santa Barbara Instrument Group
ST-2000 (all models)	Santa Barbara Instrument Group
Apogee Instruments cameras	Apogee Instruments, Inc.
Finger Lakes Instrument cameras*	Finger Lakes Instruments
PixCel Vision Cameras*	PixCel Vision

*Requires the purchase of a separate “camera plug in.” See the [CCDSOFT download page](#) for details

Device	Model	Manufacturer
Adaptive Optics	AO-7	Santa Barbara Instrument Group
Filter Wheels	CFW-6A	Santa Barbara Instrument Group
	CFW-8	Santa Barbara Instrument Group
	Homeyer Filter Wheel	Andy Homeyer
	DFW Filter Wheel	DFM Engineering
	Finger Lakes Filter Wheel*	Finger Lakes Instruments
Focusers	JMI Smart Focus	Jim's Mobile, Inc.
	Optec TCF-S Temperature Compensated Focuser	Optec, Inc.
	RoboFocus	Technical Innovations
Pulse Focusers*	NGF-S	Jim's Mobile, Inc.
*Requires TheSky Version	Zero-Image Shift Focusers	Meade Instruments Corporation

5 Level IV		
------------	--	--

Orchestrate uses a device independent, distributed (client/server) approach to automation. If you have hardware not listed, Software Bisque must develop a low-level driver for the device. Once the driver is created, Orchestrate can control the device.

Minimum System Requirements

Orchestrate runs under Windows 95/98/Me/NT/2000/XP. At least 2 megabytes of free disk space is required for installation. A minimum of 16 megabytes of RAM is recommended. Orchestrate and its companion programs are computation-intensive applications that perform many floating-point operations. A math coprocessor (included on all Pentium processors) is required.

Installing Orchestrate

Orchestrate is designed to run under Windows 95/98/Me/NT/2000, and take advantage of many of their features. Orchestrate is licensed as a single-user product — please do not install Orchestrate on a network. If you need a site-license, contact Software Bisque.

Before starting installation...

Read the Readme.txt file on the installation disk #1. It may have last-minute information we were not able to include in this manual.

Windows 95/98/Me/NT/2000/XP Home/XP Professional Installation

1. Insert the CD-ROM in the CD-ROM drive.
2. Click **Start | Settings | Control Panel**.
3. Double-click **Add/Remove Programs**.
4. Click **Install**.
5. Click **Next**. (Windows searches the CD-ROM drive for an installation program. It should find `setup.exe`. If `setup.exe` is not found, click **Browse** and select `setup.exe` on the installation disk.)
6. Click **Finish** to begin the actual installation.

The installation program prompts you for the information it needs, such as the hard drive and folder in which to install Orchestrate.

Adding the Common Files Folder to the Path System Variable

In order for the Orchestrate to operate under Windows, you *must* manually add the **Common Files** Folder to Path system variable.

To add the Common Files folder to the computer's path variable

Windows 95/98/Me

1. Click **Start | Programs | Accessories | Notepad**.
2. From Notepad, click **File | Open** and then enter `C:\AUTOEXEC.BAT`.
3. Add the following text to the last line in this file (or to the end of the PATH statement, if it already exists in this file):

```
PATH="C:\PROGRAM FILES\COMMON FILES\SYSTEM"
```

If the PATH already exists, add the folder to the end of the line:

```
PATH=C:\WINDOWS;C:\WINDOWS\COMMAND;"C:\PROGRAM FILES\COMMON FILES\SYSTEM"
```


Make sure to include the quotes at each end of the common files path, otherwise, the PATH command will fail.

4. Click **File | Save**.
5. Restart the computer.
6. Verify that the path statement now includes the common files folder by clicking **Start | Programs | MS DOS Prompt**.
7. From the MS DOS Prompt, type the word **PATH** and then press <ENTER>.

The **PATH=** statement should now include the “C:\Program Files\Common Files\System” folder.

Windows NT/Windows 2000

1. Click **Start | Settings | Control Panel** and then double-click the **System** icon.
2. In the System Properties window, click the **Environment** Tab.
3. Click the **Path** variable in the System Variables list.
4. In the Variable text box, add a semi-colon (;) to the end of the existing path and then add the text C:\Program Files\Common Files\System.
5. Click the **Set** button. If you do not click the **Set** button, the Path variable will not be set.
6. Click **OK**.
7. Restart your computer for these new settings to take effect.

Windows XP

1. Click **Start | Control Panel** and then double-click **System**.
2. In the System Properties window, click the **Advanced** Tab.
3. On the Advanced tab, click **Environment Variables**.
4. On the **Environment Variables** tab, select the **Path** variable in the **System Variables** list. If Path is not in the list, click New
5. Click **Edit**. On the Edit System Variable dialog box, in the **Variable Value** text box, add a semi-colon (;) to the end of the existing path (in necessary) and then add the text C:\Program Files\Common Files\System.

Sample Path Variable:

```
%SystemRoot%\system32;%SystemRoot%;C:\Program Files\Common Files\System
```

6. Click **OK**.
7. Click **OK**.
8. Restart your computer for these new settings to take effect.

Uninstalling Orchestrate

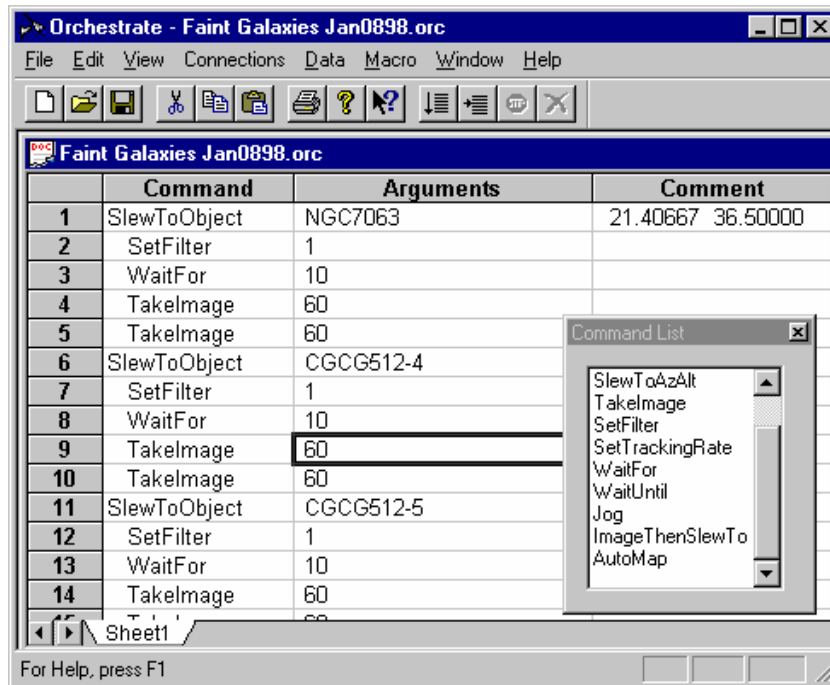
Removal is easy — Windows does it for you.

1. Click **Start | Settings | Control Panel**.
2. Double-click **Add/Remove Programs**.
3. Select **Software Bisque's Orchestrate (Remove Only)** from the list box.
4. Click **Add/Remove**.
5. In the Confirm File Deletion dialog box, click **Yes** to uninstall Orchestrate.

Orchestrate User Interface

Orchestrate is a Multiple Document Interface (MDI) application. This means that more than one script can be open at a time. You can move between various scripts by pressing Ctrl+Tab or clicking the Window command and then selecting the script you wish to make active.

The screen below shows a typical Orchestrate script showing Commands, Arguments and Comments fields. Each command occupies a single line in the spreadsheet. All commands (other than the telescope slewing commands) are slightly indented to differentiate from commands that move the telescope. This makes determining the operations that occur at each telescope position simple.



Spreadsheet Columns

The spreadsheet that displays the Orchestrate script serves several purposes. In addition displaying each command contained in the script, it provides a sort of “control center” for running the script and stepping through various parts of the script. As each command is executed, information about result of the command is displayed in the “Status” column.

Further to the right on the spreadsheet and usually out of view are three additional columns of data, **Compiled Cmd**, **Compiled Arg1** and **Compiled Arg2**. These show the script in its raw form as used internally by Orchestrate. Syntax errors within scripts can usually be detected quickly by comparing these fields to the actual script.

The Orchestrate Scripting Language

The Orchestrate scripting language consists of the following *commands*. Commands are like verbs because they result in some sort of action when executed. For example, the command SlewToRaDec instructs the telescope to move to a specific equatorial coordinate. The equatorial coordinates are the *arguments* associated with the command. Most commands require at least one argument.

Arguments are *compiled* into either numbers or other instructions that are usable by Orchestrate. For example, 1h 30m 0s is compiled into a decimal number “1.50000 hours” instead of one hour and 30 minutes.

Following is a list of the commands available in Orchestrate along with sample arguments and usage.

Command	Expected Argument(s)	Sample Argument	Uses
SlewToRaDec	Right ascension and declination.	12h 30m 0s +30d 45m 45s or 12.50000h +30.75000d. See format notes below.	Commands TheSky to move the telescope to the desired coordinates.
SlewToObject	Celestial object name.	M42, NGC5243, GSC 123:443 etc. See the Find command in TheSky.	Commands TheSky to move the telescope to the named object.
SlewToAzAlt	Azimuth and altitude coordinates.	178d14m10s 45d10m10s	TheSky site location and telescope control.
SetTrackingRate	On or Off.	Off	TheSky telescope control.
Jog	A string of characters representing the direction (North, South, East, West, Up, Down, Left or Right) to move the telescope and an amount to move in arc minutes.	North 10 South 12.2 Up 7.23	TheSky telescope control.
TakeImage	Exposure time in seconds.	60s	CCDSOFT camera control.
SetFilter	A string representing the filter name or a number representing the filter number.	Red -or- 3	CCDSOFT filter wheel control.
SetTemperature	A temperature set point for the camera or the word Off.	-25.0 -5.0 Off	CCDSOFT camera control.
SetResolution	A resolution of the camera.	High Medium Low	CCDSOFT camera control.
SetFrameMode	Set the option that determines if a Dark and Light frame are taken or just a dark or just a light	Dark and Light Light Dark	CCDSOFT camera control
SetShutterStrobing	Off or On. Turns shutter strobing on or off.	Off On	CCDSOFT camera control
WaitFor	Delay in seconds.	30	Orchestrate delay timer.
WaitUntil	Time of day and date.	01/31/1997 01h02m03s (Exact format required)	Orchestrate absolute timer.
ImageThenSlewTo	Exposure time in seconds and next object to slew to while the current exposure downloads.	10 NGC 7754	TheSky telescope control and CCDSOFT camera control.

AutoMap	None.		TheSky's Image Link capabilities, CCDSoft's CCD images, and TPoint's mapping functions.
AppStart	One of the following: THESKY, CCDSOFT, OBSERVATORY, SCHEDULER, VISITORSCENTER, TPOINT, GPSTFP, ORCHESTRATE or AUTOMADOME. See command notes below.	AppStart THESKY	The application as the argument.
AppStartup	See AppStart's arguments. See command notes below.	AppStartup THESKY	
AppShutdown	See AppStart's arguments. See command notes below.	AppShutdown THESKY	
AppExit	See AppStart's arguments. See command notes below.	AppExit THESKY	
RebootWindows	None.		

ImageThenSlewTo Notes

ImageThenSlewTo is a specialized command that minimizes the time required to repeatedly take CCD exposures then slew to objects. This is accomplished by simultaneously downloading an image from the camera while slewing the telescope to the next object. In order for this command to work correctly, you must make the following two settings: In TheSky, go to Telescope, Server Settings, and check the "Remote clients use Orchestrate's 'ImageThenSlewTo' command" option. In CCDSoft, go to Camera, Server Settings, and check "Remote clients use Orchestrate's 'ImageThenSlewTo' command" option. Exit and restart CCDSoft for this option to take effect.

SetShutterStrobing Notes

Only certain types of CCD cameras have shutter strobing support. Please contact Software Bisque for a list of these cameras.

AutoMap Notes

The AutoMap command adds a map point to the TPoint model in TheSky based on a successful image link of the last exposure taken. The normal sequence of commands in your script would be:

```
SlewToObject (or SlewToRaDec or SlewToAzAlt)
TakeExposure
AutoMap
```

You may use TheSky's Exporting command to easily create a list of SlewToObject commands, and add the additional TakeExposure, AutoMap commands. The resulting script allows you to map your telescope with your CCD camera and *without any human intervention*. This is a closed loop method of mapping your telescope; that is, your telescope model's mapping points are based on the astrometric center of the image acquired. The exposure time on the TakeExposure command must be long enough so that several stars are visible on the image so an image link is possible. Typically, ten to twenty seconds is sufficient.

In CCDSoft's Camera, Server Settings, the "Remote clients use Orchestrate's Auto-Map Capabilities" must be checked in order for AutoMap to work properly.

Important AutoMap Note

Software Bisque recommends using the free Automapper II software for automated telescope mapping. This application is specifically designed to perform reliable, unattended automated telescope mapping.

Automapper II is free, and can be downloaded from the Software Bisque ftp site.

1. Go to <ftp://www.bisque.com/outbox>.
2. Open the **Download** folder.
3. Open the **Automapper II** folder.
4. Click on the AutomapperIIFreeSetup.exe to download this file.

TakeExposure Notes for Windows 95/98/Me Users

CCDSOFT *must* be the active window when running Orchestrate scripts to ensure camera downloads are finished in a timely fashion. To make CCDSoft the active window, simply click its caption after starting your Orchestrate script (make CCDSoft the topmost window).

AppStart, AppStartup, AppShutdown, AppExit Command Notes

The AppStart command allows you to start any of the Software Bisque applications. The AppStartup command runs an embedded startup procedure in the respective application. The AppShutdown command runs an embedded shutdown procedure in the respective application. The AppExit command allows you to exit any of the Software Bisque applications.

The following table describes what the AppStartup command does for each of the following applications. If an application is not listed, its AppStartup procedure does nothing.

Application	Argument	Procedure
THESKY	No argument does the entire procedure. A decimal argument can act as bit wise mask to skip any step in the procedure.	Connects to the telescope (bit 0). Commutates telescope motors (bit 1). Connects to the dome (bit 2). Couples TheSky and the dome (bit 3).
CCDSOFT		Connects to the camera. Sets the camera temperature. Wait for the camera to come to temperature.
ORCHESTRATE	No argument does the entire procedure. A decimal argument can act as bit wise mask to skip any step in the procedure.	Connects TheSky (bit 0). Connects the telescope (bit 1). Connect the camera (bit 2). Connects the filter wheel (bit 3).
AUTOMADOME	No argument does the entire procedure. A decimal argument can act as bit wise mask to skip any step in the procedure.	Connect the dome (bit 0). Does a "Find Home" command (bit 1). Opens the dome slit (bit 2).

The following table describes what the AppShutdown command does for each of the following applications. If an application is not listed, its AppShutdown procedure does nothing.

Application	Argument	Procedure
THESKY	No argument does the entire procedure. A decimal argument can act as bit wise mask to skip any step in the procedure.	Disconnects dome (bit 0). Parks telescope (bit 1). Disconnects telescope (bit 2).
CCDSOFT		Shuts off camera temperature. Disconnects camera.
ORCHESTRATE	No argument does the entire procedure. A decimal argument can act as bit wise mask to skip any step in the procedure.	Disconnects TheSky (bit 0). Disconnects the telescope (bit 1). Disconnect the camera (bit 2). Disconnects the filter wheel (bit 3).
AUTOMADOME	No argument does the entire procedure. A decimal argument can act as bit wise mask to skip any step in the procedure.	Closes the dome slit (bit 0). Parks the dome (bit 1). Disconnects the dome (bit 2).

The above commands allow you to both startup and shutdown your system in a scripted manner. This can even be done remotely, using Orchestrate's watched folders. Simply copy your customized startup or shutdown script to the watched folder. Moreover, by putting Orchestrate in your computer's startup folder (so Orchestrate will run each time your computer starts), your system will be receptive to scripts even after a reboot.

Here is a typical customized start up script that can be pasted into Orchestrate for those who do not have domes. Note the argument for the AppStartup command for TheSky that will only connect the telescope and skip commutation and connection to the dome because bit 0 is only on.

```
AppStart,TheSky,
AppStart,CCDSOft,
AppStartup,TheSky 1,
AppStartup,CCDSOft,
AppStartup,Orchestrate,
```

Here is a typical customized shutdown script that can be pasted into Orchestrate. Note the argument for the AppShutdown command for TheSky will only Park and disconnect the telescope. The dome will not be involved because only bits 1 and 2 are on. The argument of 1 on the AppExit command for TheSky and CCDSOft cause them to exit forcefully and ignore any external connections (recommended otherwise they may not exit with a message box indicating another process is using their services).

```
AppShutDown,Orchestrate,
AppShutDown,CCDSOft,
AppShutDown,TheSky 6,
AppExit,CCDSOft 1,
AppExit,TheSky 1,
```

Format Notes

There are a number of different acceptable formats when entering equatorial or horizon coordinates as arguments to Orchestrate commands. Each number must be followed by a corresponding letter designating degrees, hours, minutes or seconds. Numbers can be entered in

either decimal or hours, minutes, seconds (HMS)/degrees, minutes, seconds (DMS) formats. Formatting is automatic if the TheSky's Data Exporting is used.

Sample	Compiles To	Example of Erroneous Input	Problem With Erroneous Input
12h 30m 0s	12.500000h	12h 30 00	The letters 'm' and 's' are missing.
12.50000h	12.50000h	12.5	The letter 'h' is missing.
30d 45m 00s	30.75000d	30d45'0"	The letters 'm' and 's' must be used to designate minutes and seconds, not the characters ' and ".

The Comment Field

This field can be used to add any additional textual information you desire. It is not used by Orchestrate, but is saved as in the header of FITS image files generated by CCDSoft. See the CCDSoft documentation for additional information. TheSky's Export command automatically places the right ascension and declination of each object in the comment field. This can be a helpful reference when examining a script command, such as SlewToObject NGC2245, and the coordinates of the object are needed.

Typing in Scripts

In most circumstances, TheSky's Export command creates scripts or some other database application that generates properly formatted lists. However, when using Orchestrate interactively, you will usually be typing in each command and argument(s).

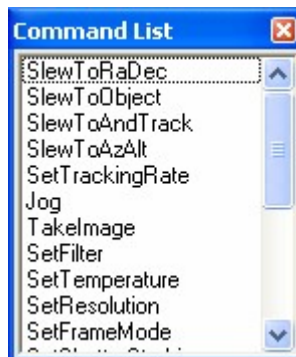


Figure 1 – Orchestrate's View | Command List dialog box.

A list of available commands can be shown on the screen by clicking View Command List. This shows the correct name for each command. When entering commands, the entire command does not have to be typed, only enough characters to distinguish the desired command from other commands. For example, entering "Take" then pressing the Tab key to move to the arguments field automatically fills in the "TakeImage" command.

Importing Scripts

Scripts that are generated by other applications (such as TheSky's Export command) can be imported into Orchestrate using the Import command on the File menu, or directly from the clipboard using the Paste command from the Edit menu. The clipboard is the temporary storage and transfer area used frequently by Windows applications.

The text file format is very similar to the format of the scripts within the Orchestrate application with the exception that commas separate commands, arguments and comments in text files.

For example, the following script is formatted properly for importing into Orchestrate. Note that there are two commas on each line, separating the Command from the argument and the argument from the comment.

```
SlewToObject , NGC7063 , 21.40667 36.50000
SetFilter , 1 ,
WaitFor , 10 ,
TakeImage , 60 ,
TakeImage , 60 ,
SlewToObject , CGCG512-4 , 21.47489 35.30417
SetFilter , 1 ,
WaitFor , 10 ,
TakeImage , 60 ,
TakeImage , 60 ,
```

Note that the spacing is not important between the various fields. Only the commas are used to separate the various parts of a command line.

Using the Clipboard

If a text-based script is present in the clipboard, you can copy it into an Orchestrate document. Use the File New command to create an empty Orchestrate document. Then, from the Edit menu, click the Paste command to copy the contents of the clipboard into the Orchestrate document.

Exporting Scripts

If you manually enter in a script within Orchestrate or modify an existing script, you can export the script to a text file for manipulation in other applications. See the section “Importing Scripts” above for information about the format of text scripts.

Establishing Connections to Software Applications or Hardware Devices

Selecting the desired application or device from the Connections menu performs connections to software applications or hardware devices (TheSky, telescope, CCD camera and filter wheel) that Orchestrate can control. Before attempting to control each of the individual applications or devices under the direction of Orchestrate, make sure that TheSky and CCDSOFT function standalone and the devices selected within those applications are available.

For example, if the TakeImage command is used in a script, the CCD camera must be connected to the computer, on which CCDSOFT is running and be operational. Since many applications are running simultaneously and a number of devices can be connected to each application, not all error situations are clearly described when a command fails. Therefore, you must be familiar with the individual applications and their operations before continuing with Orchestrate.

Establishing Remote Connections to Software Applications or Hardware Devices

You can also use Orchestrate to connect to a remote observatory (that is, Orchestrate can be run on a different computer than the TheSky, CCDSOFT, etc.). You must correctly configure the Client under View, Properties. Enter the IP address or name of the server computer running the IAServer software and enter a valid User Name and Password to log you on the remote observatory.

Starting an Orchestrate Session

To function properly, Orchestrate and the Observatory application must communicate with TheSky and CCDSOFT. The following procedure requires that both TheSky and CCDSOFT are

installed and functioning properly. See the “Server Settings in Observatory Application” section below for information about offering connections to these applications.

Below are the steps that you will normally follow to use Orchestrate. Please note that these are *order dependent*.

1. Click **Start | Programs | TheSky Astronomy Software**. *TheSky must be configured to allow remote connections from Orchestrate*. To do this, from TheSky, click **Telescope | Server Settings** and then mark the **Allow Remote Connections** option. Next, establish communications with the telescope and perform the necessary initializations.
2. Click **Start | Programs | CCDSoft CCD Astronomy Software**. *CCDSOft must be configured to allow remote connections from Orchestrate*. To do this, from CCDSoft, click **Camera | Server Settings** and then mark the **Allow Remote Connections** option. Next, establish communications with the camera and perform the necessary initializations.
3. Click **Start | Programs | Internet Astronomy Software | Observatory**. From the Observatory application, click **File | New**. A new document appears showing all connections being offered to Orchestrate (for example, TheSky, Telescope, CCDSoft, Camera, and Filter Wheel). This procedure needs to be performed only once. Subsequent Orchestrate or scripting sessions can skip this step.
4. Click **Start | Programs | Orchestrate Scripting Software | Orchestrate**. From Orchestrate, click **Connections | TheSky, Connections | Telescope, Connections | Camera, and Connections | Filter Wheel**.

Server Settings in Observatory Application

Notes:

- The **Offer Connections To** option on the Server Settings dialog box in the Observatory application applies to TheSky version 5 Level IV, and does not apply to TheSky6 Professional Edition.
- If Orchestrate version 1.00.007 or earlier is installed, then the Observatory application must be run at least once before running Orchestrate or before scripting TheSky version 5 (via RASCOM). To launch the Observatory application, click **Start | Programs | Internet Astronomy Software | Observatory**.

When running Orchestrate version 1.00.007 and earlier with TheSky version 5, the Observatory application acts as a “client” that communicates with up to three different “server” applications: TheSky version 5 Level IV, CCDSoft and AutomaDome. From the Observatory application, use the Server Connections command in the Observatory menu to specify the applications that Orchestrate will be communicate with.

For example, suppose you want to run a test script in Orchestrate that just slews the telescope to different objects in the sky. No connection with CCDSoft or AutomaDome would be required. From the Observatory application, on the Observatory menu, click Server Connections (Note: The Observatory menu is only present if there are no Observatory documents loaded). In the Server Connections dialog box, mark the TheSky option and clear the CCDSoft and AutomaDome options.



When a new Observatory document is created, only connections to TheSky will be established. In the Observatory document, the following text appears:

Offering Connections To:
 TheSky Version 5
 Telescope

Once you have established connections to the various applications and devices that will be used in the script, you are ready to execute the script.

Troubleshooting Server Connections

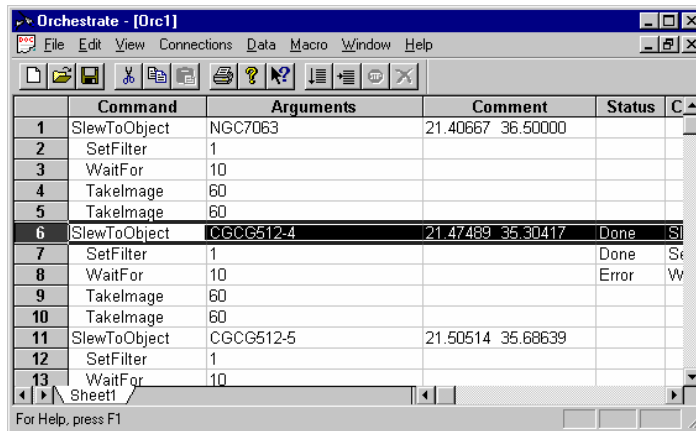
Problem: The error message: “Error connecting to TheSky (or Telescope or CCDSOft). Connection refused. This usually means that the computer you are connecting to is not running the appropriate server application(s). Error code = 10061 (0x274d)” appears when attempting to establish server connections.

Solution: Make sure that both TheSky and CCDSOft are configured to allow remote connections. See the section “Starting an Orchestrate Session” for details.

Running a Script

On the Script menu, use the Run command to start a script. The script starts at the first line in the script unless a particular line is highlighted elsewhere in the script.

Starting Past the Beginning



Scripts can be started and run from any line. For example, in the script shown below a Run or Step command causes the SlewToObject instruction to be executed (line number six in the script)

rather than starting at the beginning.

	Command	Arguments	Comment	Status	C
1	SlewToObject	NGC7063	21.40667 36.50000		
2	SetFilter	1			
3	WaitFor	10			
4	Takelimage	60			
5	Takelimage	60			
6	SlewToObject	CGCG512-4	21.47489 35.30417	Done	SI
7	SetFilter	1		Done	Se
8	WaitFor	10		Error	W
9	Takelimage	60			
10	Takelimage	60			
11	SlewToObject	CGCG512-5	21.50514 35.68639		
12	SetFilter	1			
13	WaitFor	10			

To highlight a line or multiple lines in a script, click on the numbers to the left of the commands in the spreadsheet. Drag over desired numbers to highlight multiple lines.

Executing a Portion of a Script

To execute a series of sequential commands within a script, highlight the commands in the script then click the Run command from the Script menu. Only the highlighted commands are executed. In the example below, only commands six through 10 will be executed when the Run command is issued.

Running a Script Continuously

Setting the Loop command under the Script menu causes the current script to be executed continuously. As soon as the end of the script is reached, it will restart at the beginning.

Running a Portion of a Script Continuously

To execute a series of commands within a script repeatedly, click Macro Loop. Next highlight the commands in the script then click Script Run. Only the highlighted commands will be executed, and once the last highlighted command is executed, it will jump to the first highlighted command and continue execution.

Stopping a Script

This command can be used to stop the execution of script without aborting the command that is currently in progress. Only after the command is completed and control is returned to Orchestrate will the script be stopped. For example, if you are in the middle of a 120-second exposure and you press the Stop button, the exposure will be completed but the next command in the script will not be executed. This is in contrast with the *Abort* command described below.

Aborting a Script

The Abort command immediately stops script execution and aborts any command currently in progress. For example, clicking abort while the telescope is slewing will immediately cause the Telescope to stop slewing. If an exposure is in progress, the exposure is aborted.

Sample Scripts

Command	Comments	
SlewToObject	NGC4114	12.12008 - 14.18528
WaitFor	10	
TakeImage	60	
TakeImage	60	
SlewToObject	KARA-DWARF	12.24128 - 12.32778
WaitFor	10	
TakeImage	60	
TakeImage	60	
SlewToObject	NGC4263	12.32839 - 12.22500
WaitFor	10	
TakeImage	60	
TakeImage	60	
SlewToObject	NGC4329	12.38911 - 12.55861
WaitFor	10	
TakeImage	60	
TakeImage	60	

Ending an Orchestrate Session

These are order dependent!

1. From Orchestrate, click **File | Exit**.
2. From the Observatory program, click **File | Exit**.
3. From TheSky and CCDSoft, click **File | Exit**.

If you have Orchestrate running and have a connection to the TheSky (or CCDSoft) and exit TheSky (or CCDSoft), you will be warned that other applications are connected to TheSky (or CCDSoft). You need to exit Orchestrate before exiting TheSky (or CCDSoft).

Exporting Data from TheSky

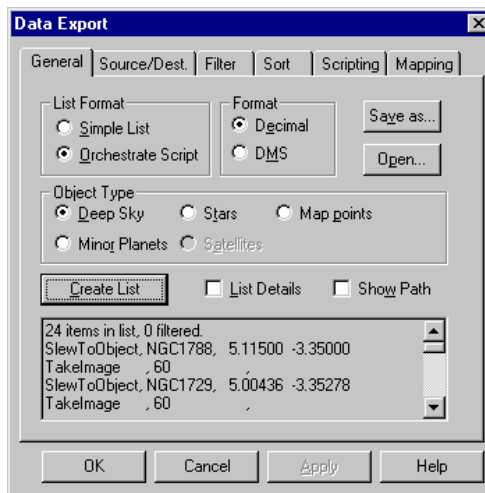
The Export command uses the extensive database functions of TheSky Astronomy Software setup queries and export lists of information. The capabilities go beyond simply extracting celestial data from TheSky.

The Export command is also closely tied with Orchestrate. This command provides quickest and easiest means of generating Orchestrate Scripts.

The number of different queries possible is nearly endless. Following are just a few examples of the types queries that can be used to generate lists.

- NGC open-clusters currently above the horizon
- Galaxies in TheSky database brighter than 12 magnitude with a size of four arc-minutes or greater
- Minor planets currently between 4 hours RA and 6 hours RA above 30 degrees altitude
- Man-made satellites currently above the horizon
- Stars currently visible on the Sky Display

Once the lists are generated, they can be sorted in a number of different ways. You can even choose to have them optimized so that the path between the various objects, from a telescope slewing perspective, is minimized.



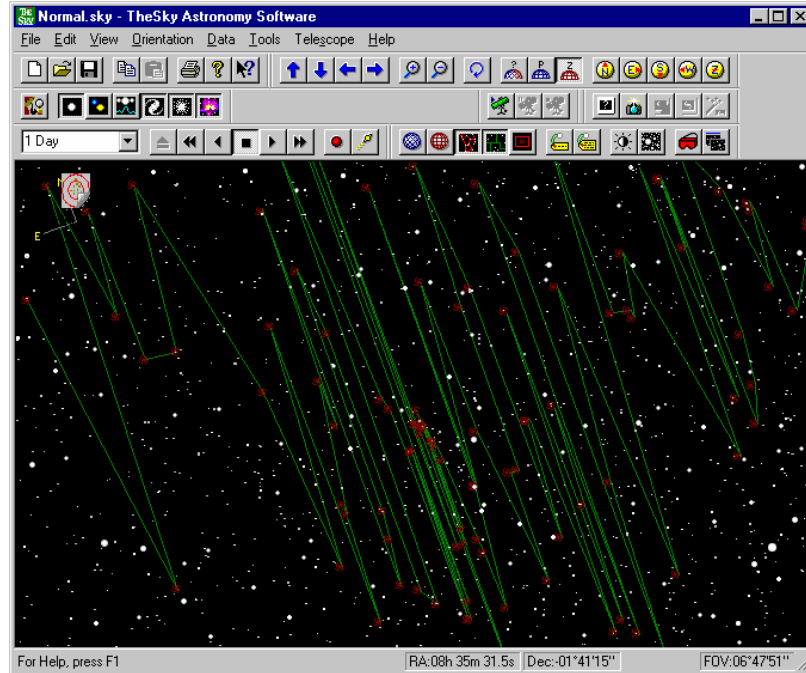
The Export command uses a number of different tabbed dialogs, or tabs, for specifying the desired type of list. The options in each tab are described below.

General

The General tab is used to create the list of exported data and is based on the options in all other tabs. Once a search criterion, or query, is entered, clicking the Create List button causes databases to be scanned and objects that satisfy the query are added to the list. Information in the Source/Destination, Filter and Sort tabs is always used to generate lists.

Simple List Format

A Simple List adds a single line to the textual list for each object that is added. The general format of each line includes the Name, Object Type, Equatorial Coordinates, Magnitude, Major and Minor axis of the object.



For example, the following is a sample list created of galaxies surrounding NGC 891:

CGCG538-47	Galaxy	02h 21m 05.50s	+41° 49' 12.0"	15.6	0.0
0.0					
CGCG538-54	Galaxy	02h 22m 50.40s	+42° 09' 29.0"	15.8	0.0
0.0					
NGC891	Spiral Galaxy	02h 22m 33.00s	+42° 20' 48.0"	10.8	13.4
2.5					
CGCG539-5	Galaxy	02h 23m 53.60s	+42° 12' 22.0"	15.8	0.0
0.0					
CGCG539-9	Galaxy	02h 24m 47.20s	+42° 01' 28.0"	15.8	0.0
0.0					
NGC906	Spiral Galaxy	02h 25m 16.30s	+42° 05' 23.0"	14.0	1.8
1.6					
NGC911	Elliptical Galax	02h 25m 42.40s	+41° 57' 22.0"	13.7	1.7
0.9					
NGC914	Spiral Galaxy	02h 26m 05.10s	+42° 08' 38.0"	13.7	1.8
1.3					
CGCG539-26	Galaxy	02h 26m 55.00s	+42° 01' 00.0"	15.8	0.0
0.0					
UGC1859	Type C Galaxy	02h 24m 44.40s	+42° 37' 23.0"	13.9	1.7
1.1					
PGC9068	Galaxy	02h 23m 11.70s	+42° 57' 54.0"	30.0	0.0
0.0					
NGC898	Spiral Galaxy	02h 23m 20.30s	+41° 57' 04.0"	13.8	2.0
0.4					

Orchestrate List Format

Here is the same list as above, but this time the Orchestrate Script format was selected:

```
SlewToObject, CGCG538-47, 2.35153 41.82000
TakeImage , 60 ,
SlewToObject, CGCG538-54, 2.38067 42.15806
TakeImage , 60 ,
SlewToObject, NGC891, 2.37583 42.34667
TakeImage , 60 ,
SlewToObject, CGCG539-5, 2.39822 42.20611
TakeImage , 60 ,
SlewToObject, CGCG539-9, 2.41311 42.02444
```

```

TakeImage      , 60
SlewToObject, NGC906, 2.42119 42.08972
TakeImage      , 60
SlewToObject, NGC911, 2.42844 41.95611
TakeImage      , 60
SlewToObject, NGC914, 2.43475 42.14389
TakeImage      , 60
SlewToObject, CGCG539-26, 2.44861 42.01667
TakeImage      , 60
SlewToObject, UGC1859, 2.41233 42.62305
TakeImage      , 60
SlewToObject, PGC9068, 2.38658 42.96500
TakeImage      , 60
SlewToObject, NGC898, 2.38897 41.95111
TakeImage      , 60

```

Show Path

Click Show Path if you want to see lines connecting each of the objects in the created list. In the following Show Path example, you can see a series of lines connecting each of the galaxies on the Sky Display. Displaying paths is a good way to quickly verify that the generated list is what you expected.

Number Format

The equatorial or horizon coordinates generated by the Export command can be formatted in hours/degrees, minutes and seconds (HMS/DMS) or in decimal form.

HMS/DMS Sample

CGCG538-47	Galaxy	02h 21m 05.50s	+41°49'12.0"	15.6	0.0
0.0					
CGCG538-54	Galaxy	02h 22m 50.40s	+42°09'29.0"	15.8	0.0
0.0					

Decimal Sample

CGCG538-47	Galaxy	2.3515278	41.8199984	15.6	0.0
0.0					
CGCG538-54	Galaxy	2.3806668	42.1580552	15.8	0.0
0.0					

Object Type

The Object Type specifies which of a number of distinctly different types will be included in the list.

Deep Sky

Deep Sky objects include non-stellar objects outside the solar system. Double and variable star are cataloged separately from stellar databases, so they too are considered deep sky objects.

The section on Filtering below describes how you can further filter the Deep Sky category into only object types of interest.

Minor Planets

This option will traverse the list of *extended* minor planets that are currently computed. Extended minor planets differ from *local* minor planets in the following ways. Local minor planets are included in time skip simulations and are updated each time the site information is changed. Their number is limited to 100. The positions of over 40,000 extended minor planets can be computed and displayed on the Virtual Sky. This is very computationally intensive, so the positions of extended minor planets are computed only once. They remain visible for a specified period afterwards (up to three hours).

Stars

These lists contain stars from the TheSky's stellar databases. The data source will be either the GSC (Guide Star Catalog) or the Hipparcos/Tycho catalogs. Since the most common use of stellar lists will be for astrometric purposes, the more accurate Hipparcos/Tycho positional information will be used when available.

Satellites

Lists of man-made satellites can be generated from those currently loaded in TheSky. Satellites are loaded using the Satellites Dialog in the Data menu.

The position of fast moving satellites changes so rapidly that filtering based on coordinates may not make sense. Slower satellites such as geosynchronous and GPS satellites can be filtered based on their horizon coordinates. When an Orchestrate script containing satellites is generated, two SlewTo entries are generated for each object. This allows the telescope to refine its position, as the satellite no doubt moved while the telescope was slewing.

Map Points

These lists are used specifically for generating evenly distributed points across the sky that will be used for mapping a telescope.

List Source/Destination

There are many options for specifying the source of the list's data. You may want those objects currently visible on the Sky Display, or you may wish to individually select each object to be added to the list.

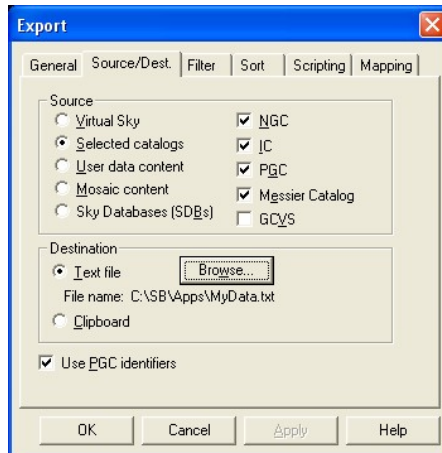


Figure 2: TheSky's Export dialog box, Source/Destination tab.

Once created, the list is output to either the Windows clipboard or an ASCII text file. The data can then be used by other applications such as Orchestrate.

Data Source

On Sky Display

The most effective method for selecting objects in a certain part of the sky is using all of the built in features of TheSky.

Using the Zoom, Up, Down, Left, and Right commands, the Sky Display can be adjusted as needed to determine the spatial extents of the objects that will be included in the query.

Using the various built in filters contained within TheSky, you can be very selective as to the types and magnitudes of objects that are displayed. This filtering carries into the Export command when the On Sky Display option is selected.

The Sky Display Filters can also be used when generating lists using the Selected Catalogs option. This is discussed in the Export command's Filter section below.

Selected catalogs

Use this option when lists of entire object classes from various deep-sky catalogs are required. Data from one or more of the NGC, IC, PGC or Messier catalogs can be included. Note that the PGC catalog contains over 70,000 entries; so traversing this list of objects can require be time consuming.

This option can also be used when generating lists of minor planets or satellites. Rather than selecting from minor planets or satellites on the Sky Display, the entire database that is currently loaded is traversed. When making lists of minor planets, the entire set of *extended minor planets* is searched. When making lists of satellites, each satellite contained in the current Two-Line-Element file (TLE) is searched.

Add User-Defined Data

If you wish to individually select each object for a list, you can use the Add User-Defined Data command of TheSky. Objects are added to the User-Defined Data area in TheSky using Ctrl+Click on each object. These objects can then be copied into the Export command by choosing this option.

Figure 3 – TheSky's Filters dialog box.

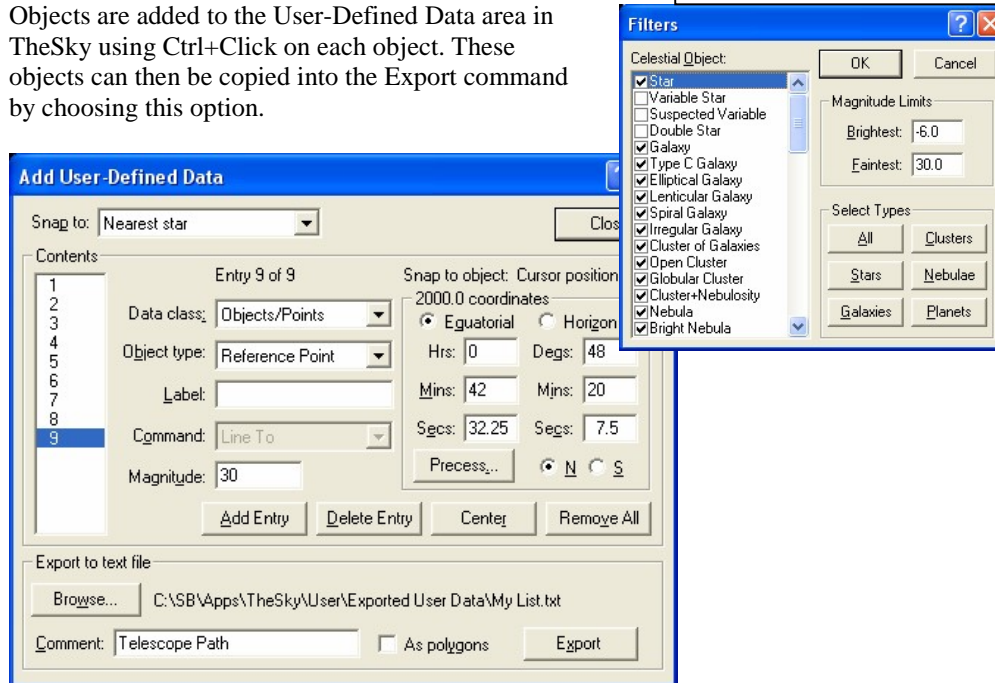


Figure 4: TheSky's Add User-Defined Data dialog box.

Example:

The following steps are used to “queue” a dozen galaxies of the more than 40 that are currently on the Sky Display.

1. Click **Data | Add User-Defined Data**.
2. Click **Remove All** to clear the User-Defined Data area.

3. Select **Nearest Non-Stellar** from the **Snap To** list.
4. Click **Close** on the Add User-Defined Data dialog box.
5. Hold down the Ctrl key, and click on each non-stellar object you wish to add to the list. When finished, click **Data | Export**. See TheSky's documentation for details about exporting data from TheSky.

Once each of the individual objects is in the User-Defined Data area, they can be added to a list by using the User-Defined Data Content list source.

Mosaic content

When an area of the sky needs to be covered systematically, the mosaic feature in TheSky can be used to generate a series of equatorial coordinate centers based on a specified Field of View Indicator. For example, if your optical system yields a field of view of 15x15 arc-minutes, a series of four images is required to cover the entire moon (which is approximately 30x30 arc-minutes across).

Once generated in TheSky, these points can be transferred into the Export command with this option.

Data Destination

When a list of objects is created, it can be directed to a text file or the Windows clipboard.

ASCII Text File

Choosing this option causes the list to be sent to a text file. You can choose the name of the text file by clicking the Browse button. A default file name "REPORT.TXT" is used if a different file name is not specified. Each time Create List is selected from the General Tab of the Export dialog, the text file will be overwritten.

Clipboard

If you wish to copy the created list to another application such as Orchestrate, the quickest method is using the Windows Clipboard. The list content is copied as ASCII text so it can be pasted into other applications such as word processors, text editors, etc.

Filtering Objects

The Filter tab provides additional query properties for exporting data. These additional *filters* can help you select objects from a particular region of the sky or objects that have certain properties.

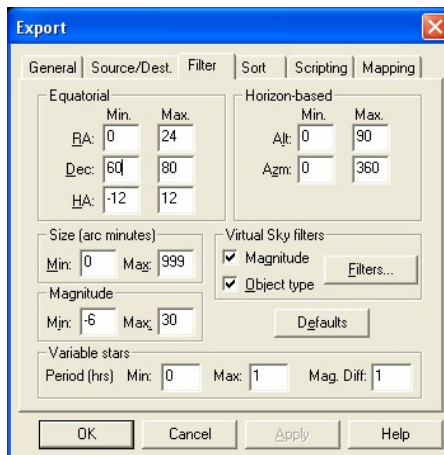


Figure 5: TheSky's Export dialog box, Filter tab.

Filters can be used together and the number of combinations of different filters can quickly become daunting. Most of the time only one or two filter parameters are used. The default filter values perform no filtering; that is, they include all ranges of the sky, all object sizes and all magnitudes.

Equatorial

Use these filters to specify a particular region of the sky in the query. For example, if you want to include only objects between declination 60 and 80 degrees, set the minimum declination to 60 degrees and the maximum declination to 80 degrees.

Horizon-based

The horizon-based coordinate filters are relative to the current date, time and location entered in the Site Information dialog. If you are planning an observing session during the day using filters based on altitude and azimuth, make sure to set the time information correctly for when you will be observing.

Size

Enter the minimum and maximum size of deep-sky objects that should be included in the exported data. The size is entered in arc-minutes. This option only applies when Deep Sky option is selected from the General tab; otherwise, it is ignored.

Magnitude

Enter the limiting magnitude for the query.

Sky Display Filters

Click this button to display the Filters dialog box so that different object types can be turned on or off. This allows even greater filtering capabilities. For example, you could query only for open clusters by turning off all other deep-sky object types.

Default

This button sets all filter values to their minimum or maximum values thereby making them inactive. For example, the minimum right ascension value is set to 0.0 and the maximum to 24.0. Since this range of right ascension must include all objects, this filter is effectively inactive.

Sorting

Object data that is exported during a query can be sorted using several different techniques. If the RA option Sort Type option is selected, then the objects are sorted based on their right ascension. If the Declination Sort Type option is selected, then the objects in the list are sorted by declination. The sort order can be ascending (increasing values) or descending (decreasing values).

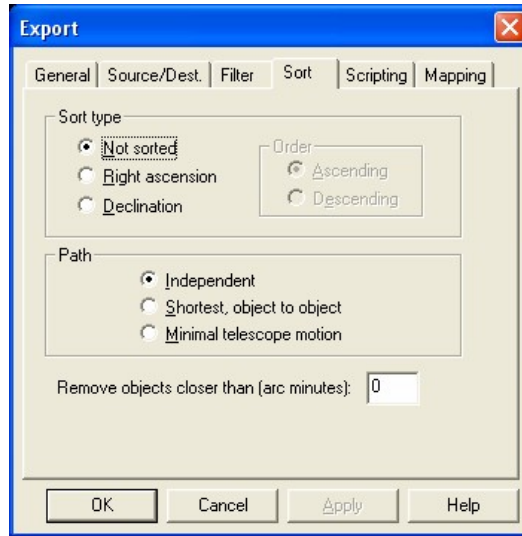


Figure 6 – TheSky's Export dialog box, Sort tab.

Path

To increase the efficiency of a robotic telescope mount, the slew time between objects can be minimized. This is accomplished by selecting the Shortest Path option in the Sort tab.

The first option, Shortest, Object to Object begins at the first object in the list (the first object also depends on the Sort Type) and finds the next closest object until all objects in the list are exhausted. “Closeness” is defined as the minimum right ascension or declination angle, not angular separation. For example, at high declinations, moving an angular distance of one degree might require a 60-degree actual slew in right ascension.

The second option Shortest, From Starting Point keeps a list close to the original sorted order.

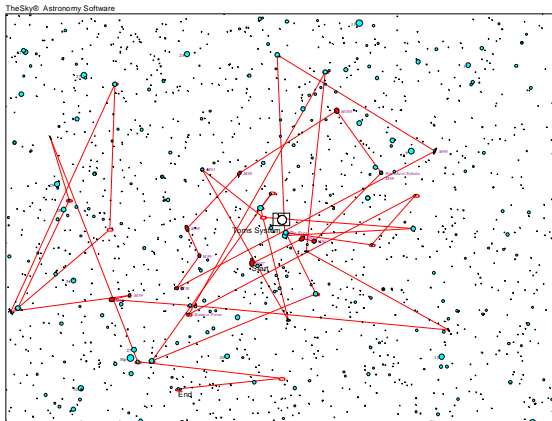


Figure 1 – Objects are not sorted.

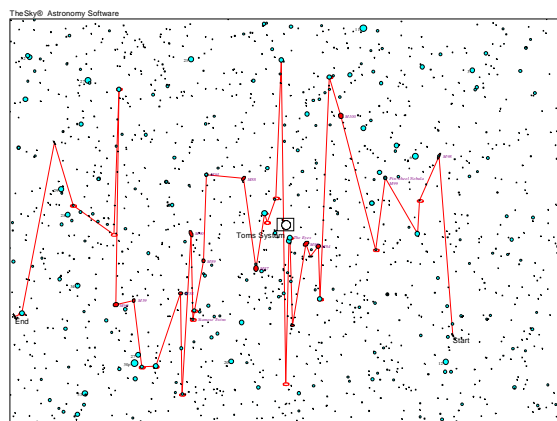


Figure 2 – Objects are sorted by right ascension.

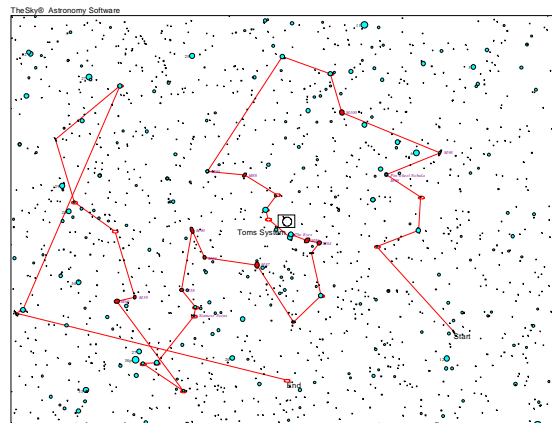


Figure 3 – Objects are sorted by right ascension and shortest path,

Figures 1-3 contain sample star charts created by TheSky using the Export command. In Figure 1, a script is created to slew to each of the non-stellar objects on the Virtual Sky, with no sorting. In Figure 2, the objects are sorted in right ascension. In Figure 3, the shortest path, object-to-object optimization is enabled. There are significantly fewer “connect-the-dot” lines on this chart relative to the others which translates to minimal telescope slewing.

Scripting

The ability to generate scripts for the Orchestrate scripting program is perhaps the most powerful feature of the Export command. Using options in the Scripting tab, you specify which operations will be performed at each stop of the telescope during a script.

Control of the telescope, CCD camera and filter wheel is done in Orchestrate by using various commands and their associated arguments.

Slew Command

Note that the Slew command is the first prompt on the Scripting dialog. This Orchestrate command can be one of the following: SlewToObject, SlewToRADec or SlewToAzAlt. When

scripting deep-sky objects, generally the SlewToObject command should be used since it makes the script very readable. For example, understanding **SlewToObject M42** is much more straightforward than `SlewToRADec 5h35m24s -5d25'30"`.

The SlewToRADec command causes the Export command to insert the equatorial coordinates of each object in the SlewTo command rather than the object name. In some circumstances, this might be preferred since when the script is executed, the databases of TheSky do not have to be queried to determine the coordinates of the object before issuing the SlewTo command to the telescope.

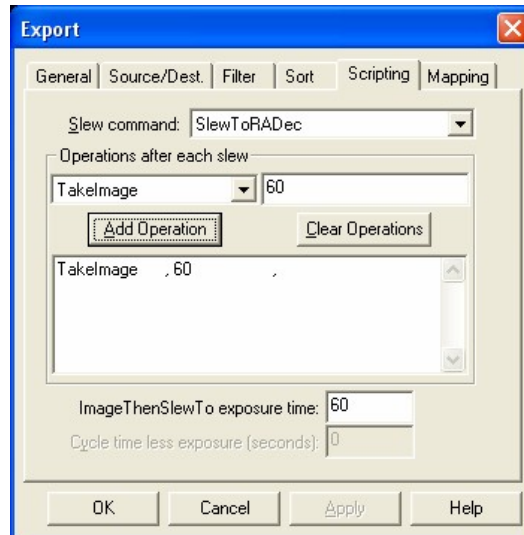


Figure 7 – TheSky's Export dialog box, Scripting tab.

If you are creating a script that directs the telescope to moving objects such as minor planets or satellites, then use the SlewToObject command. Otherwise, the coordinates generated at the time the script is created will be incorrect for the time the script is actually run. When the SlewToObject command is used on minor planets or satellites, the position of the object in question is computed at that time. When satellites are included in a script, two (2) slew commands are automatically generated because during the first slew the satellite may move a significant distance. In practice, the second slew generally is short enough to get to the satellite before it has moved significantly.

Operations after Each Slew

Once the telescope is pointed to the desired coordinates by using the appropriate Slew command, you may want to take an image with a CCD camera or perhaps pause long enough to observe through an eyepiece. Other possible operations include setting a filter on the filter wheel, or taking multiple CCD images of varying lengths. All of this is possible using the Orchestrate command language.

The procedure for creating a set of operations to perform at each Slew location is as follows.

- Select the desired command from the command list
- Enter the argument associated with the command if applicable
- Choose Add operation

For example, to take a 60 second image you would select the TakeImage command then enter 60 in the edit control to the right of the command list. Then choose Add operation. You will see the following in the operations box:

TakeImage, 60,

The commas that separate commands from arguments are automatically supplied. The last comma is added because there are 3 parts to each Orchestrate command,

1. The command.
2. The argument.
3. A comment field.

The comment field is very useful to annotate the operation. Comment fields associated with the TakeImage command can be automatically added to FITS files as they are created.

If you wish to take two 60-second exposures at each slew location then simply press the Add operation button again to add a second TakeImage command to the list.

Here are a few samples of operation lists:

```
WaitFor      , 15
TakeImage    , 60
TakeImage    , 60
Jog          , north 10
TakeImage    , 60
TakeImage    , 60
```

In the above sample, after the slew we wait for 15 seconds, to reduce any motion from the telescope mount from the slew and possibly eliminate any backlash in the system. We then take a 60-second exposure followed by another 60-second exposure. Then, the telescope jogs North 10 arc-minutes and we take two more 60-second exposures.

Mapping

The Mapping tab contains options for generating a list of evenly distributed points for a region of the sky that can be used for mapping an automated telescope.

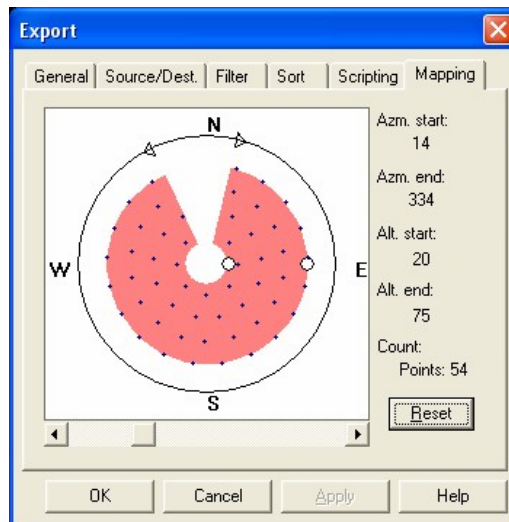


Figure 8 – TheSky's Export dialog box, Mapping tab.

The graphic on the Mapping tab represents a horizon-based overhead view, looking down the zenith. The red shaded area represents the area of the sky over which an evenly distributed set of points will be generated.

Use this graphic to define the region of the sky over which a telescope-mapping run will take place. Click and drag the two small triangles to define the starting and ending azimuths of the region. Click and drag the two small white circles to define the starting and ending altitudes of the region.

The density of points in the region is adjusted using the slider control below the graphic. Drag the slider to the left to increase the density of evenly distributed points over the region.

Once these five parameters are defined, from the General tab, click the Query button to generate the list of points.

Watched Folder

You can configure Orchestrate to “watch” or monitor a folder for new scripts. When a script appears in the Watch Folder (typically put there by some external process like an FTP copy, batch-file copy, etc.), Orchestrate will automatically import and run the script. Once the script is run, it is placed in the Done Folder. You can set the Watched Folder and Done Folder from the Options, Watched Folder, Setup command.

Scripts must be in text format, not in the native Orchestrate file format. Using the text format allows other applications to easily generate Orchestrate scripts without needing to know Orchestrate’s native file format.

Hint: To generate the text script file format, highlight one or more lines in a loaded script. Then, from the Edit menu, click Copy. Next, from any text editor like Windows Notepad, on the Edit menu, click Paste. Orchestrate can be used to both create (Edit, Copy or File, Export) and import (File, Import) the text script file format.

Watched Folder Conventions

Script Number

A text script file copied into the Watched Folder must have eight digits, with a `.txt` extension. For example, `00000001.txt`. The eight digits represent the script number. Scripts are run in order of script number, not by the date of the file. That is, script `00000001.TXT` is always run before script `00000002.TXT`. Successive script numbers do not have to increase by one.

Handshake File

Before Orchestrate will load a file from the Watched Folder, a file named “HANDSHAKE” (without any extension) must be present in the Watched Folder and have a date *later than or the same as* that of the text script file with the lowest script number. The handshake file prevents Orchestrate from reading the file while another process is writing the file.

Corresponding TLE File

Orchestrate will also load a corresponding TLE file into TheSky if such a file exists in the Watched Folder. An example of a corresponding TLE for `00000001.TXT` would be `00000001.TLE`. Orchestrate will load the corresponding TLE into TheSky before the script is run. This way, very current TLE elements can be maintained. A corresponding TLE file is not required. If there is no corresponding TLE, the text script will run as normal.

Working Folder

Before Orchestrate runs a text script from the Watched Folder, the text script file and the corresponding TLE file (if it exists) are moved to the working folder. The working folder is a folder named “Working” in the Orchestrate folder (the folder where Orchestrate is run). This convention makes it apparent which script is currently running by looking at the contents of the Working folder.

Done Folder

Once a script is complete, it is saved into the Done Folder as a native Orchestrate file with a name that corresponds to the text script file name. To keep with our example, 00000001.TXT produces a corresponding 00000001.ORB file in the Done Folder. In addition, the text script file and the corresponding TLE file are also moved to the Done Folder.

The native Orchestrate file holds valuable debugging information like how well the import took place (do the text script file and Orchestrate files match?) and the error log. If an error occurs anywhere along the watch folder process, any pertinent files end up in a folder named Errors in the Done Folder. Look at the error log in the corresponding Orchestrate file to determine where the error occurred. An error encountered does not cause watch process to stop. So if 00000001.txt ended up with an error, 00000002.txt, 00000003.txt, and so on, would still be run.

Monitoring The Watched Folder

To start monitoring the Watched Folder, click **Option | Watched Folder | Start Watch**.