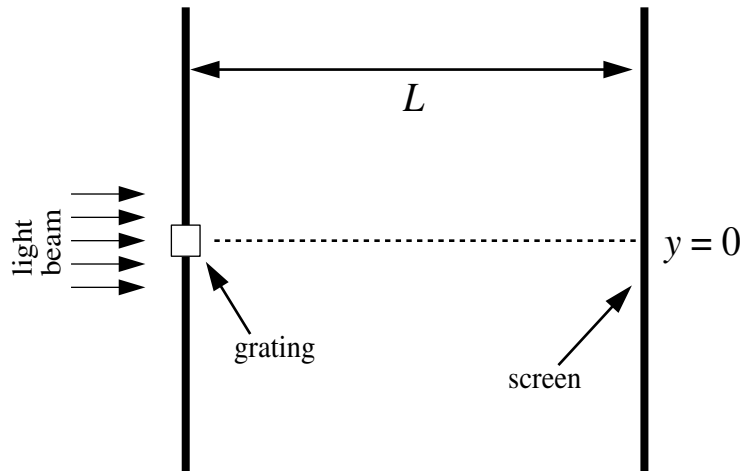


Quiz 10

A beam of light composed of two colors: 400 nm (violet) and 600 nm (red) is directed at a grating with 500 slits per mm. On the below figure locate on the screen (very approximately, no calculations) where all of the maximums up and including $m=\pm 2$ would be found (label them by color and m). Given that $L=2$ m, calculate the y location of the $m=2$ red maximum



Quiz 10

A beam of light composed of two colors: 400 nm (violet) and 600 nm (red) is directed at a grating with 500 slits per mm. On the below figure locate on the screen (very approximately, no calculations) where all of the maximums up and including $m=\pm 2$ would be found (label them by color and m). Given that $L=2$ m, calculate the y location of the $m=2$ red maximum

